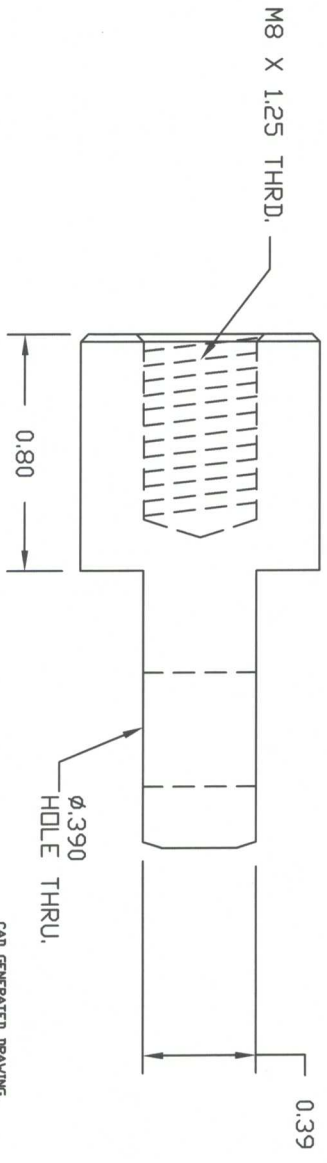
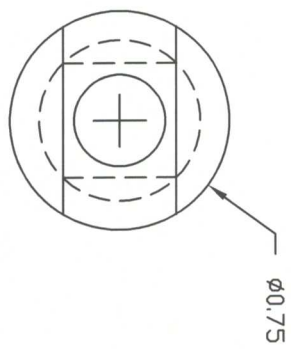
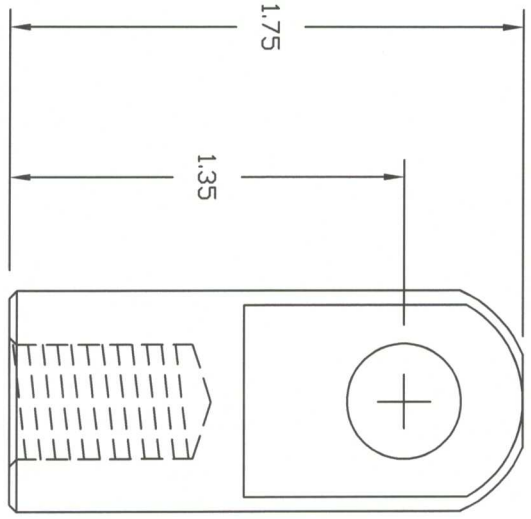


REVISIONS			
REV	DESCRIPTION	DATE	APPROVED



CAD GENERATED DRAWING,  
DO NOT MANUALLY UPDATE

DO NOT SCALE PRINT  
UNLESS OTHERWISE SPECIFIED  
DIMENSIONS ARE IN INCHES  
INTERPRET DIM AND TOL PER ASME Y14.5M - 1994  
TOL ON ANGLES 2° 3PL, 0.05 3PL, 0.00

NOTICE: THE INFORMATION CONTAINED IN THIS  
DRAWING IS THE PROPERTY OF AMERITDOLL  
CORPORATION AND IS UNCLASSIFIED  
EXCEPT FOR SUCH INFORMATION AS IS  
SPECIFICALLY IDENTIFIED AS UNCLASSIFIED  
BY WRITTEN AUTHORIZATION FROM AMERITDOLL

5. ALL DIAMETERS CONCENTRIC WITHIN .005 T.I.R.
  4. MAX SURFACE FINISH: 63 Ra.
  3. BREAK ALL EDGES: .010 MAX.
  2. MATERIAL: 6061-T6 ALUM.
  1. WORKMANSHIP PER AMERITDOLL STANDARD
- NOTES: UNLESS OTHERWISE SPECIFIED

APPROVED	D. CASVELL	2/29/2012
CHECKED	R. PRICE	2/29/2012
DRAWN	D. CASVELL	2/29/2012
MATERIAL		

AMERITDOLL  
MFG INC.

AMERITDOLL MFG. INC.  
64 CORPORATE PARK DRIVE  
CENTRAL SQUARE, NY 13036  
PHONE: (315) 668-2172

ALUM. BLADE END  
875 SERIES

SIZE	CAGE CODE	PART NO
A	6JGQ3	EFAL390-8

SCALE: 1:1    WEIGHT: 22.5g    SHEET 1 OF 1