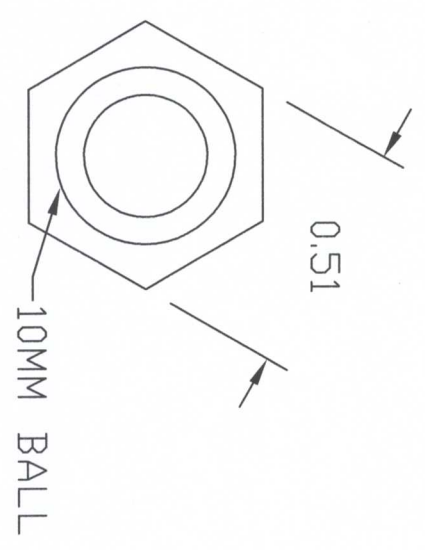
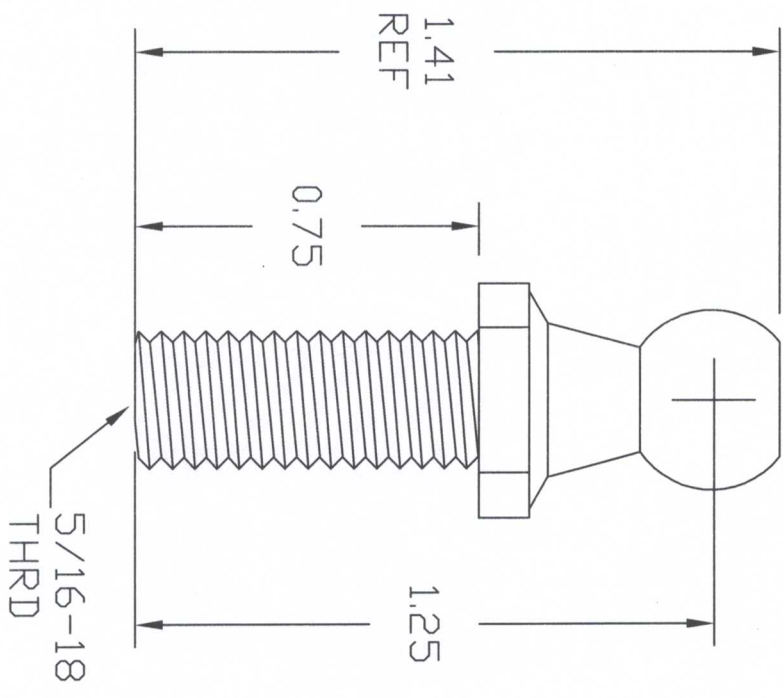


REVISIONS			
REV	DESCRIPTION	DATE	APPROVED
A	MATERIAL CALL OUT	1/26/12	D.CASWELL



5. ALL DIAMETERS CONCENTRIC WITHIN .005 T.I.R.
 4. MAX SURFACE FINISH: 63 Ra.
 3. BREAK ALL EDGES: .010 MAX.
 2. MATERIAL: 303/304 STAINLESS STEEL
 1. WORKMANSHIP PER AMERITDOL STANDARD
- NOTES: UNLESS OTHERWISE SPECIFIED

CAD GENERATED DRAWING.
DO NOT MANUALLY UPDATE

DO NOT SCALE PRINT
UNLESS OTHERWISE SPECIFIED
DIMENSIONS ARE IN INCHES
TOLERANCES ARE AS SHOWN
INTERPRET DIM AND TOL PER ASME Y14.5M - 1994
TOL ON ANGLE: ± .015 ± .010
NOTICE: THE INFORMATION CONTAINED IN THIS DRAWING IS THE PROPERTY OF AMERITDOL. IT IS TO BE USED FOR THE MANUFACTURE OF THE PART ONLY. NO OTHER USES ARE PERMITTED WITHOUT WRITTEN AUTHORIZATION FROM AMERITDOL.

APPROVED	D. CASWELL	1/17/2010
CHECKED	R. PRICE	1/17/2010
DRAWN	D. CASWELL	1/17/2010
MATERIAL		

AMERITDOL
MFG INC.
AMERITDOL MFG INC
64 CORPORATE PARK DRIVE
CENTRAL SQUARE, NJ 13036
PHONE: (315) 668-2172

STAINLESS STEEL BALL STUD
10MM BALL

SIZE	CAGE CODE	PART NO
A	6JGQ3	BSSS-10E75
SCALE: 1:1	WEIGHT: 13g	SHEET 1 OF 1