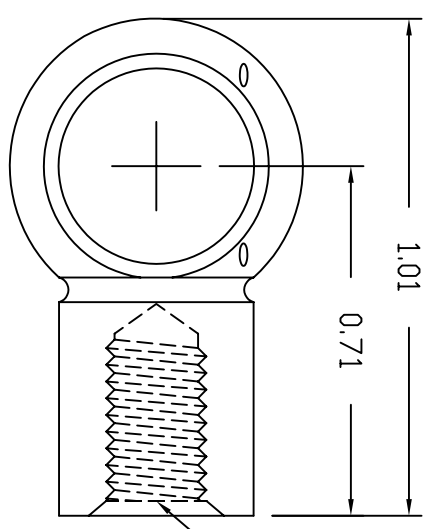
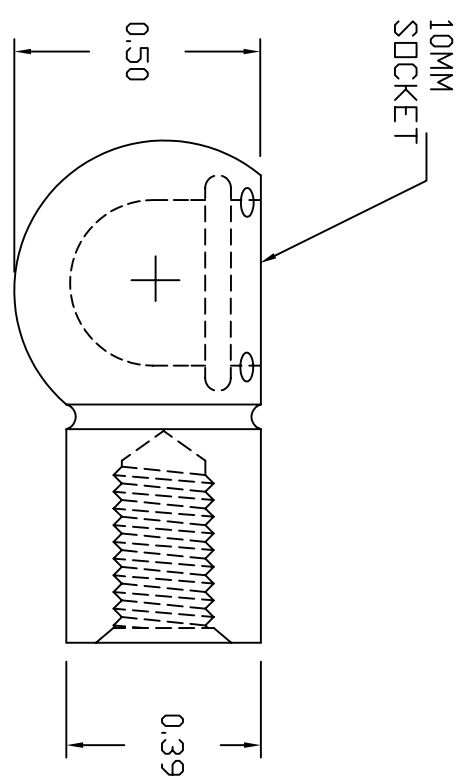


REVISIONS			
REV	DESCRIPTION	DATE	APPROVED



M6 x 1  
.400 FULL THREAD



10MM  
SOCKET

CAD GENERATED DRAWING,  
DO NOT MANUALLY UPDATE

DO NOT SCALE PRINT  
UNLESS OTHERWISE SPECIFIED  
DIMENSIONS ARE IN INCHES  
INTERPRET DIM AND TOL PER ASME Y14.5M - 1994  
TOL DIMENSIONS: F: 0.005, M: 0.010, S: 0.010  
NOTES: 1. DIMENSIONS TO CENTER UNLESS OTHERWISE SPECIFIED  
2. DIMENSIONS TO SURFACE UNLESS OTHERWISE SPECIFIED  
3. DIMENSIONS TO HOLE UNLESS OTHERWISE SPECIFIED  
4. DIMENSIONS TO CENTER UNLESS OTHERWISE SPECIFIED  
5. DIMENSIONS TO SURFACE UNLESS OTHERWISE SPECIFIED

5. ALL DIAMETERS CONCENTRIC WITHIN .005 T.I.R.
  4. MAX SURFACE FINISH: 63 Ra.
  3. BREAK ALL EDGES: .010 MAX.
  2. MATERIAL: 316 STAINLESS STEEL
  1. WORKMANSHIP PER AMERITDOL STANDARD
- NOTES: UNLESS OTHERWISE SPECIFIED

APPROVED	D. CASWELL	11/15/2000
CHECKED	R. PRICE	11/15/2000
DRAWN	D. CASWELL	11/15/2000
MATERIAL	SEE NOTE 2	

AMERITDOL MFG INC.  
64 CORPORATE PARK DRIVE  
CENTRAL SQUARE, NY 13036  
PHONE: (315) 668-2172

AMERITDOL  
MFG INC.

STAINLESS STEEL 10MM BALL SOCKET

SIZE	CAGE CODE	PART NO
A	6JG03	EFSS-10H

SCALE: 1:1 WEIGHT: SHEET 1 OF 1