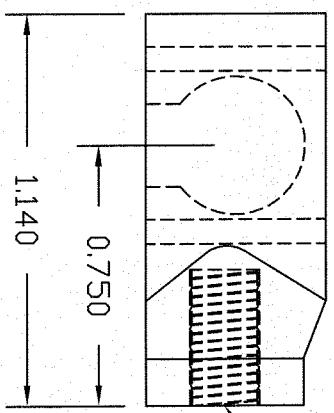
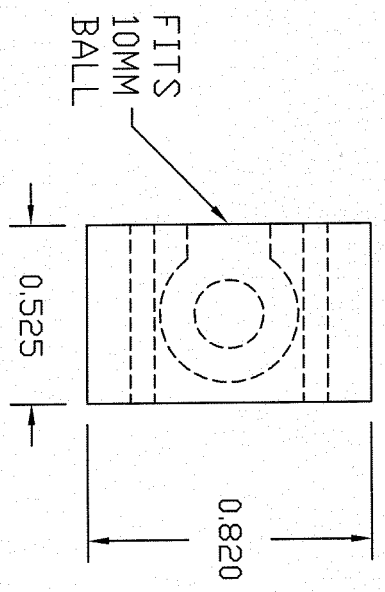
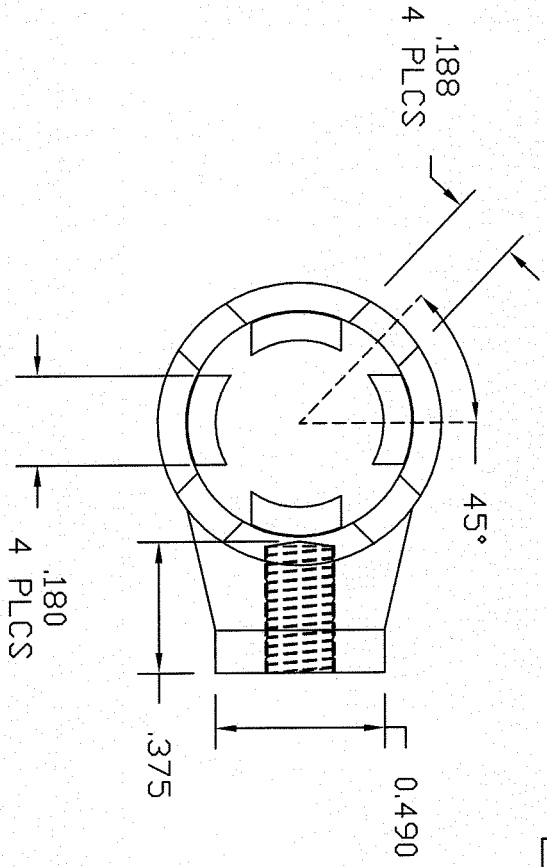


REVISIONS			
REV	DESCRIPTION	DATE	APPROVED



M6 X 1.0-6H  
THRD

CAD GENERATED DRAWING,  
DO NOT MANUALLY UPDATE

DO NOT SCALE PRINT  
UNLESS OTHERWISE SPECIFIED  
DIMENSIONS ARE IN INCHES  
INTERPRET DIM AND TOL PER ASME Y14.5M - 1994  
TOL ON ANGLES ± DEP. JIS SPC 300

NOTICE: THE INFORMATION CONTAINED IN THIS  
DRAWING IS THE PROPERTY OF AMERITDOL  
CORPORATION. IT IS TO BE USED ONLY FOR THE  
PART, PROJECT AND QUANTITY SPECIFICALLY  
IDENTIFIED HEREIN. ANY REUSE OR  
REPRODUCTION OF THIS INFORMATION WITHOUT  
WRITTEN AUTHORIZATION FROM AMERITDOL  
IS PROHIBITED.

5. ALL DIAMETERS CONCENTRIC WITHIN .005 T.I.R.
  4. MAX SURFACE FINISH: 63 Ra.
  3. BREAK ALL EDGES: .010 MAX.
  2. MATERIAL: ZYTEL 77G33L BLK (PA612 33YG7) 35% MAX REGRIND ALLOWED
  1. WORKMANSHIP PER AMERITDOL STANDARD
- NOTES: UNLESS OTHERWISE SPECIFIED

APPROVED BY	DATE
DESIGNED BY	DATE
CHECKED BY	DATE
DRAWN BY	DATE
MATERIAL	
	SEE NOTE 2

**AMERITDOL**  
MFG INC.

AMERITDOL MFG INC  
64 CORPORATE PARK DRIVE  
CENTRAL SQUARE, NY 13036  
PHONE: (315) 668-2172

COMPOSITE END FITTING

SIZE	CAGE CODE	PART NO
A	6JG03	EFC-10M
SCALE: 1:1	WEIGHT:	SHEET 1 OF 1

CAD FILE