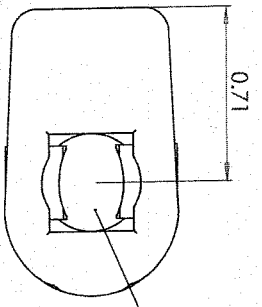
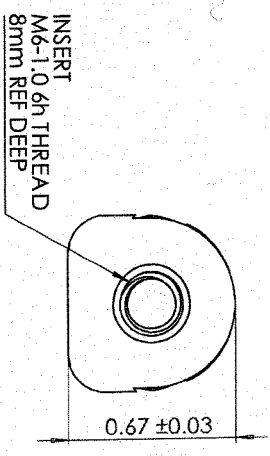
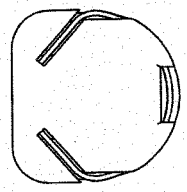
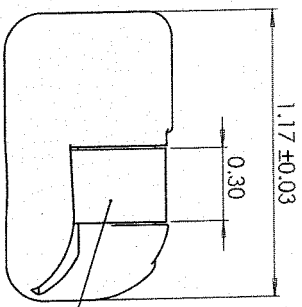
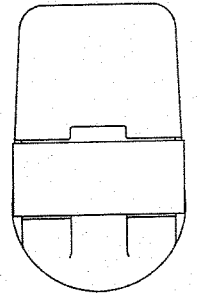
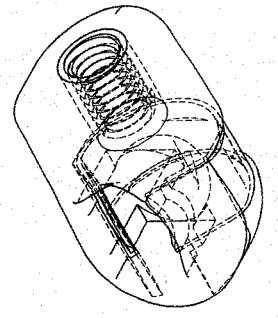


REVISIONS			
REV	DESCRIPTION	DATE	APPROVED



5. ALL DIAMETERS CONCENTRIC WITHIN .005 T.I.R.
 4. MAX SURFACE FINISH: 63 Ra.
 3. BREAK ALL EDGES: .010 MAX.
 2. MATERIAL: NYLON 6/6
 1. WORKMANSHIP PER AMERITDOL STANDARD
- NOTES: UNLESS OTHERWISE SPECIFIED

CAD GENERATED DRAWING.
DO NOT MANUALLY UPDATE

DO NOT SCALE PRINT
UNLESS OTHERWISE SPECIFIED
DIMENSIONS IN MILLIMETERS
REMOVE ALL DIMENSIONS
INTERPRET DIM AND TOL PER ASME Y14.5M - 1994
TOL UNLESS OTHERWISE SPECIFIED

NOTICE: THE INFORMATION CONTAINED IN THIS DRAWING IS THE PROPERTY OF AMERITDOL MFG INC. IT IS TO BE USED ONLY FOR THE PROJECT AND NOT FOR REUSE OR REPRODUCTION WITHOUT WRITTEN AUTHORIZATION FROM AMERITDOL.

APPROVED	D. CASWELL	8/15/2011
CHECKED	R. PRICE	8/15/2011
DRAWN	D. CASWELL	8/15/2011

MATERIAL: SEE NOTE 2

AMERITDOL
MFG INC.

AMERITDOL MFG INC
64 CORPORATE PARK DRIVE
CENTRAL SQUARE, NY 13036
PHONE: (315) 668-2172

END FITTING

SIZE	CAGE CODE	PART NO
A	6JG03	CEF-10M
SCALE: 1:1	WEIGHT:	SHEET 1 OF 1