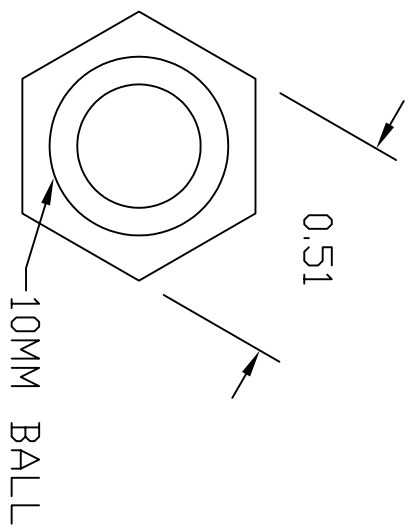
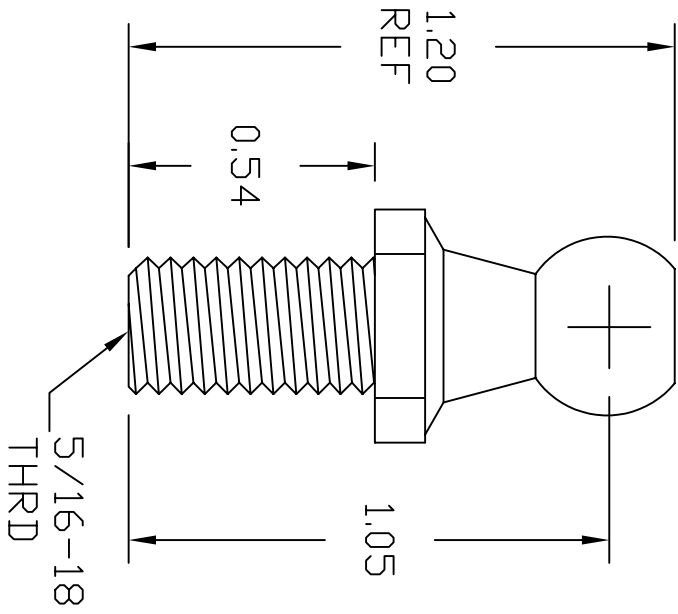


| REVISIONS | | | |
|-----------|-------------|------|----------|
| REV | DESCRIPTION | DATE | APPROVED |
| | | | |



- ALL DIAMETERS CONCENTRIC WITHIN .005 T.I.R.
 - MAX SURFACE FINISH: 63 Ra.
 - BREAK ALL EDGES: .010 MAX.
 - MATERIAL: ZINC PLATED STEEL
 - WORKMANSHIP PER AMERITDOL STANDARD
- NOTES: UNLESS OTHERWISE SPECIFIED

CAD GENERATED DRAWING,
DO NOT MANUALLY UPDATE

| |
|--|
| DO NOT SCALE PRINT UNLESS OTHERWISE SPECIFIED DIMENSIONS ARE IN INCHES INTERPRET DIM AND TOL PER ASME Y14.5M - 1994 TOL DIMENSIONS IN FINISHED DIMENSIONS TOL DIMENSIONS IN S&W DIMENSIONS |
| NOTES: IF ANY DIMENSIONS OR DIMENSIONS IN THIS DRAWING ARE IN CONFLICT WITH THE PART, THE PART SHALL BE THE GOVERNOR. THE DRAWING SHALL BE REVISED BY THE PART, EXCEPT WHEN SUCH TOLERANCES ARE SPECIFIED IN WRITTEN MODIFICATION FROM THE PART. |

| | | |
|----------|------------|-----------|
| APPROVED | D. CASVELL | 1/17/2000 |
| CHECKED | R. PRICE | 1/17/2000 |
| DRAWN | D. CASVELL | 1/17/2000 |
| MATERIAL | SEE NOTE 2 | |

AMERITDOL
MFG INC.
AMERITDOL MFG INC.
64 CORPORATE PARK DRIVE
CENTRAL SQUARE NY 13036
PHONE: (315) 668-2172

ZINC PLATED STEEL BALL STUD
10MM BALL

| | | |
|------------|-----------|--------------|
| SIZE | CAGE CODE | PART NO |
| A | 6JGQ3 | BSZ-10E |
| SCALE: 1:1 | WEIGHT: | SHEET 1 OF 1 |