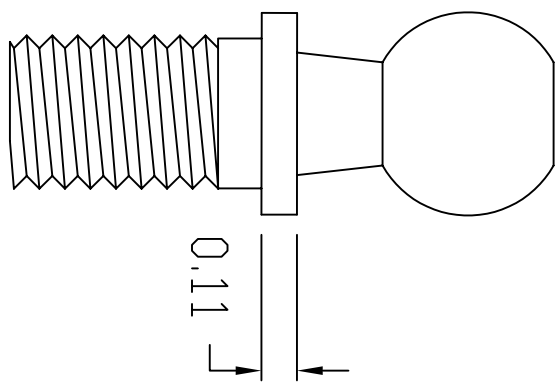
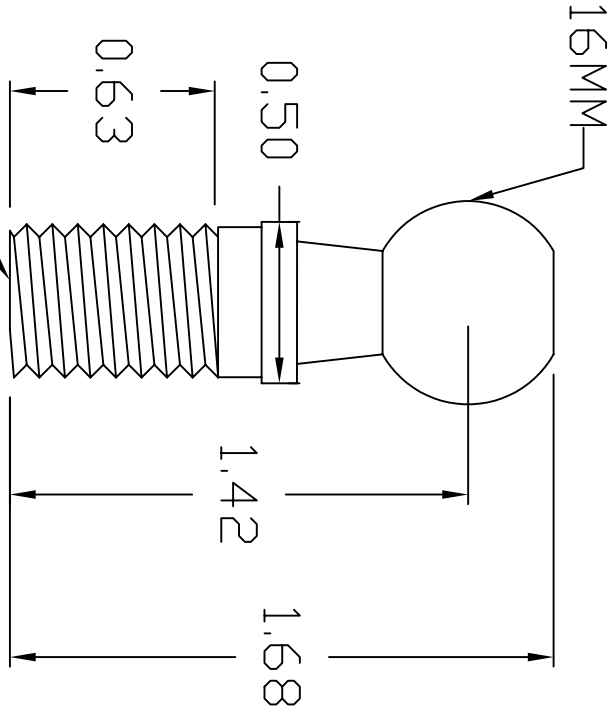


| REVISIONS | | | |
|-----------|-------------|------|----------|
| REV | DESCRIPTION | DATE | APPROVED |
| | | | |



M12 x 1.75

5. ALL DIAMETERS CONCENTRIC WITHIN .005 T.I.R.
 4. MAX SURFACE FINISH: 63 Ra.
 3. BREAK ALL EDGES: .010 MAX.
 2. MATERIAL: 303/304 STAINLESS STEEL
 1. WORKMANSHIP PER AMERTDOL STANDARD
- NOTES: UNLESS OTHERWISE SPECIFIED

CAD GENERATED DRAWING,
DO NOT MANUALLY UPDATE.

DO NOT SCALE PRINT
UNLESS DIMENSIONS ARE IN INCHES
INTERPRET DIM AND TOL PER ASME Y14.5M - 1994
TOL DIM ANGLE: 2' 2PL 015 3PL 010

NOTICE: THE INFORMATION CONTAINED IN THIS DRAWING IS FURNISHED BY AMERTDOL AND SHALL NOT BE REPRODUCED OR TRANSMITTED IN ANY FORM OR BY ANY MEANS, ELECTRONIC OR MECHANICAL, INCLUDING PHOTOCOPYING, RECORDING, OR BY ANY INFORMATION STORAGE AND RETRIEVAL SYSTEM, WITHOUT PERMISSION FROM AMERTDOL.

| | | |
|----------|------------|-----------|
| APPROVED | D. CASWELL | 8/23/2010 |
| CHECKED | R. PRICE | 8/23/2010 |
| DRAWN | D. CASWELL | 8/23/2010 |
| MATERIAL | SEE NOTE 2 | |

| | | |
|---|-------------|---|
| <p>AMERTDOL MFG INC.</p> <p>64 CORPORATE PARK DRIVE CENTRAL SQUARE, NY 13036 PHONE: (315) 668-2172</p> | | <p>STAINLESS STEEL 16MM BALL STUD 1165 SERIES</p> |
| SIZE | CAGE CODE | PART NO |
| A | 6JGQ3 | BSSS-16M |
| SCALE: 1:1 | WEIGHT: 37g | SHEET 1 OF 1 |