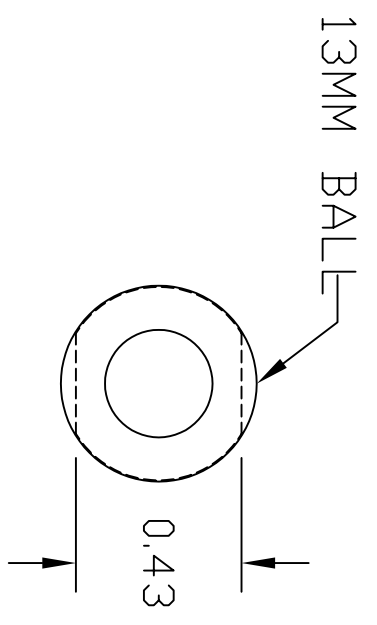
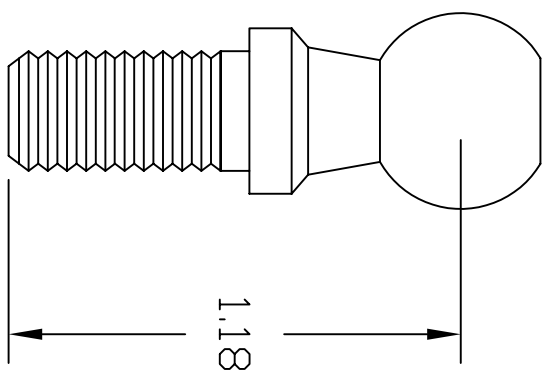
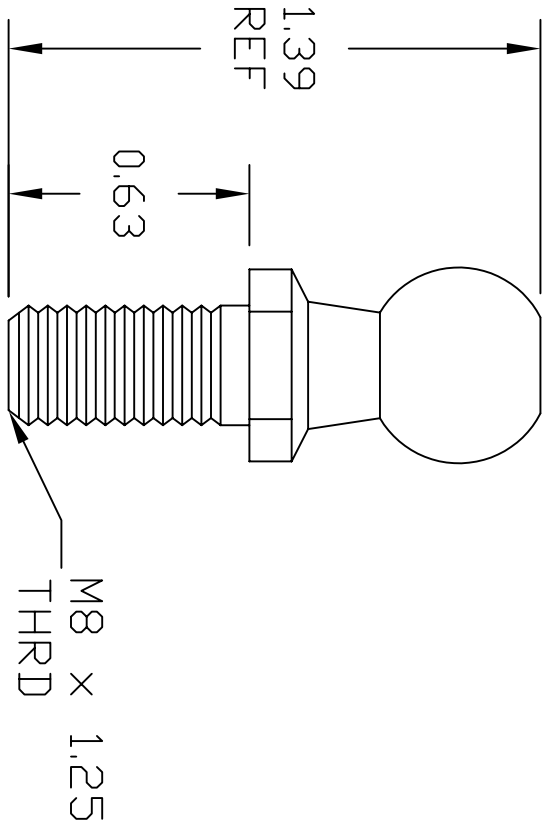


REVISIONS			
REV	DESCRIPTION	DATE	APPROVED



5. ALL DIAMETERS CONCENTRIC WITHIN .005 T.I.R.
  4. MAX SURFACE FINISH: 63 Ra.
  3. BREAK ALL EDGES: .010 MAX.
  2. MATERIAL: 303/304 STAINLESS STEEL.
  1. WORKMANSHIP PER AMERITDOL STANDARD
- NOTES: UNLESS OTHERWISE SPECIFIED

CAD GENERATED DRAWING.  
DID NOT MANUALLY UPDATE

DO NOT SCALE PRINT  
UNLESS OTHERWISE SPECIFIED  
DIMENSIONS ARE IN INCHES  
INTERPRET DIM AND TOL PER ASME Y14.5M - 1994  
TOL ON ANGLE: 2° RPL, 0.15° 3PL, 0.10°  
NOTICE: THE INFORMATION CONTAINED IN THIS DRAWING IS THE PROPERTY OF AMERITDOL. IT IS TO BE USED FOR THE MANUFACTURE OF THE PART. WRITTEN AUTHORIZATION FROM AMERITDOL IS REQUIRED FOR ANY REVISIONS OR REUSE OF THIS DRAWING FOR ANY OTHER PURPOSE.

APPROVED	D. CASWELL	12/8/2010
CHECKED	R. PRICE	12/8/2010
DRAWN	D. CASWELL	12/8/2010
MATERIAL	SEE NOTE 2	

**AMERITDOL**  
MFG. INC.  
AMERITDOL MFG. INC.  
64 CORPORATE PARK DRIVE  
CENTRAL SQUARE, NJ 13036  
PHONE: (315) 668-2172

STAINLESS STEEL 13MM BALL STUD  
875 SERIES

SIZE	CAGE CODE	PART NO
A	6JGQ3	BSSS-13M
SCALE: 1:1	WEIGHT: 16g	SHEET 1 OF 1