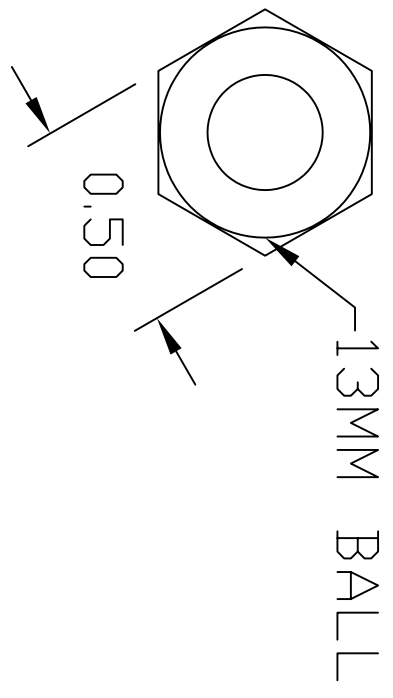
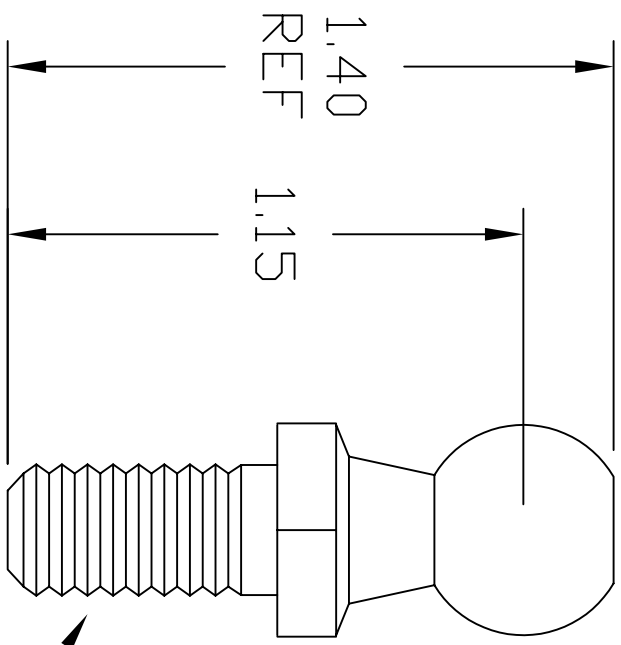


REVISIONS			
REV	DESCRIPTION	DATE	APPROVED



5/16 x 18 THRD

1. ALL DIAMETERS CONCENTRIC WITHIN .005 T.I.R.
 2. MAX SURFACE FINISH: 63 Ra.
 3. BREAK ALL EDGES: .010 MAX.
 4. MATERIAL: 303/304 STAINLESS STEEL
 5. WORKMANSHIP PER AMERITDOL STANDARD
- NOTES: UNLESS OTHERWISE SPECIFIED

CAD GENERATED DRAWING,
DO NOT MANUALLY UPDATE

DO NOT SCALE PRINT
UNLESS OTHERWISE SPECIFIED
DIMENSIONS ARE IN INCHES
INTERPRET DIM AND TOL PER ASME Y14.5M - 1994
TOL ON ANGLES 2° 3PL, .015 3PL, .010

NOTICE: THE INFORMATION CONTAINED IN THIS DRAWING IS THE PROPERTY OF AMERITDOL. IT IS TO BE USED FOR THE MANUFACTURE OF THE PART DESCRIBED IN THIS DRAWING ONLY. WRITTEN AUTHORIZATION FROM AMERITDOL IS REQUIRED FOR ANY OTHER USE.

APPROVED	D. CASVELL	1/12/2011
CHECKED	R. PRICE	1/12/2011
DRAWN	D. CASVELL	1/12/2011
MATERIAL	SEE NOTE 2	

AMERITDOL
MFG. INC.

AMERITDOL MFG. INC.
64 CORPORATE PARK DRIVE
CENTRAL SQUARE, NJ 13036
PHONE: (315) 668-2172

STAINLESS STEEL 13MM BALL STUD
875 SERIES

SIZE	CAGE CODE	PART NO
A	6JGQ3	BSSS-13E
SCALE: 1:1	WEIGHT: 19g	SHEET 1 OF 1