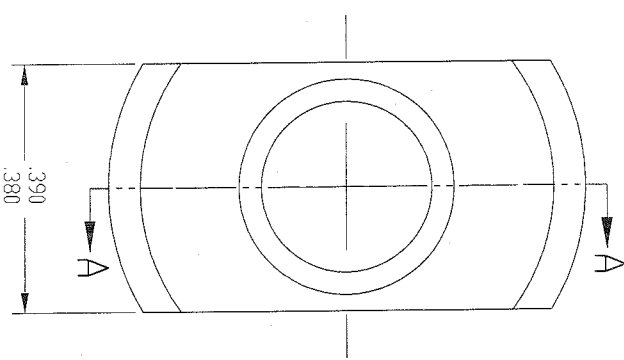
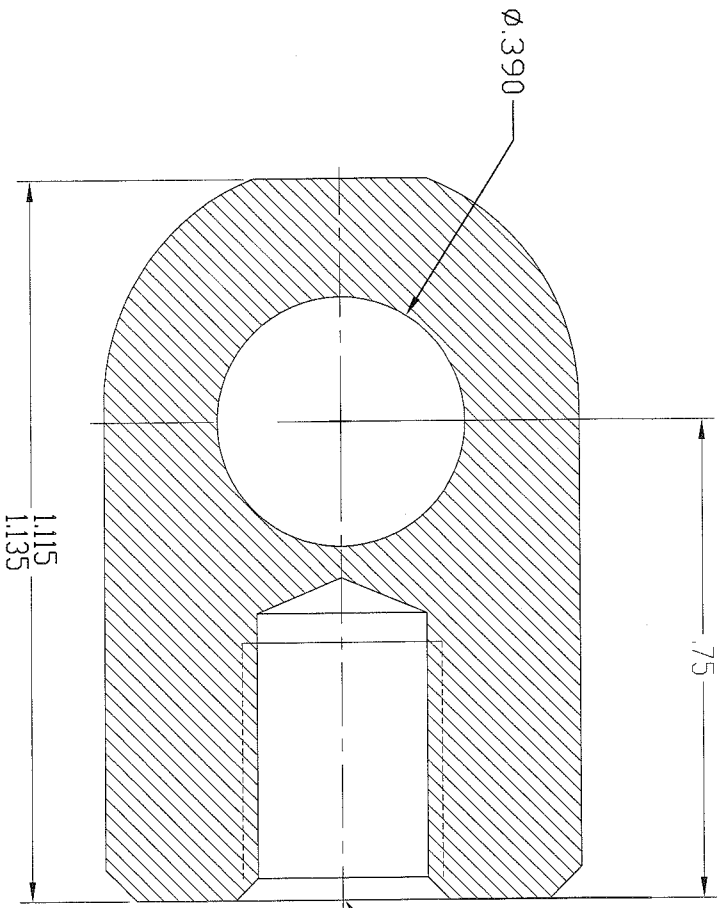


REVISIONS			
REV	DESCRIPTION	DATE	APPROVED



SECTION A-A

5. ALL DIAMETERS CONCENTRIC WITHIN .005 T.I.R.
  4. MAX SURFACE FINISH: 63 Ra.
  3. BREAK ALL EDGES: .010 MAX.
  2. MATERIAL: 303/304 STAINLESS STEEL
  1. WORKMANSHIP PER AMERTIDOL STANDARD
- NOTES: UNLESS OTHERWISE SPECIFIED

CAD GENERATED DRAWING  
DO NOT MANUALLY UPDATE

UNLESS OTHERWISE SPECIFIED  
DIMENSIONS ARE IN INCHES  
INTERPRET DIMENSIONS TO NEAREST TENTH UNLESS NOTED OTHERWISE  
TOLERANCES: 2" DIA: .015 3/4": .010  
TOLERANCE: .010  
NOTICE: THE INFORMATION CONTAINED IN THIS DRAWING IS THE PROPERTY OF AMERTIDOL AND IS TO BE USED FOR THE MANUFACTURE OF THE PART. WRITTEN AUTHORIZATION FROM AMERTIDOL IS REQUIRED FOR REPRODUCTION OF THIS DRAWING.

APPROVED	D. CASWELL	12/16/2009
CHECKED	R. PRICE	12/16/2009
DRAWN	D. CASWELL	12/16/2009
MATERIAL	SEE NOTE 2	

**AMERTIDOL**  
MFG. INC.  
AMERTIDOL MFG. INC.  
64 CORPORATE PARK DRIVE  
CENTRAL SQUARE, NY 13036  
PHONE: (315) 668-2172

STAINLESS STEEL BLADE END  
875 SERIES

SIZE	CAGE CODE	PART NO
A	6JG03	BESS-390-8
SCALE: 1:1	WEIGHT:	SHEET 1 OF 1